

Central Link

He karere tā te Kaunihera ā Rohe o Whakaahurangi
News from the Stratford District Council

24 Hour Phone 06 765 6099 | StratfordDC@stratford.govt.nz | Stratford.govt.nz

Receive the Central Link by email. Register at YourSay.Stratford.govt.nz



TE KAUNIHERA Ā ROHE O
WHAKAAHURANGI
STRATFORD
DISTRICT COUNCIL

Open for feedback!



Good decision making starts with having the right information at hand. Before making big decisions, we'll often ask what you think first.

You may think your voice won't make a difference, but every idea and opinion is carefully considered before a final decision is made.

Right now, we've got 2 open opportunities for you to share your views at YourSay.Stratford.govt.nz



Provide your feedback on our transport safety improvement plans for Stratford Primary School and the surrounding neighbourhood.

Closes at 4pm Friday 21 March



Have your final say on our draft Victoria Park Reserve Management Plan - think of it like our park vision for the next 10 years.

Closes on Monday 17 March

Public Notices

Temporary road closure cancelled: Junction Road

The closure of Junction Road between 551 Junction Road and Tawhiwhi Road on Saturday 15 March will no longer take place. South Taranaki Car Club has cancelled their gravel hill-climb event that was planned for that day, because of low entry numbers.

Meeting Schedule - March

- Audit and Risk Committee:** Tuesday 18 March at 2pm
- Percy Thomson Trust:** Thursday 20 March at 3pm, Stratford District Council Committee Room
- Workshop:** Tuesday 25 March at 2pm
- Policy & Services Committee:** Tuesday 25 March at 3pm

Meetings and workshops will be held in the Council Chambers on Miranda Street, Stratford, unless stated otherwise. Visit Stratford.govt.nz/Schedule for updates to meeting and workshop times as these may change.

S Hanne | Chief Executive

Are you up-to-date with the latest water restriction information

Water restrictions are currently in place, and as Pātea River water levels change, so too will our water restriction levels.

Make sure you check Stratford.govt.nz/PublicNotices to see what current restrictions mean for your water use.

Download the free Antenna app for info straight to your device!



LURKING UNDER THE STREETS, A HIDDEN, GREASY MENACE GROWS...

In the sewers beneath our feet, **fatbergs** are lurking and growing ever stronger.

These nasty creations begin life as the oil, grease, and fat that goes down your drain, reacting with the pipes and mixing with flushed waste to grow bigger and bigger. They can block pipes and cause overflows, potentially leading to expensive clean-ups for homes, businesses, and council.

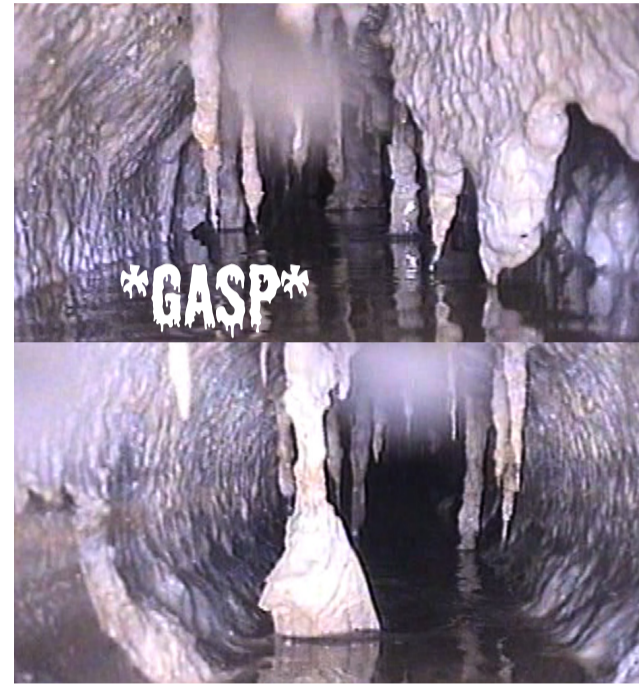
Defeat the fatbergs before it's too late!

Don't put fat, oil, or grease down your sink or drain. Running hot water while the fat goes down the drain will only move it further down the pipe. It won't stop the fat from causing problems.

Don't flush sanitary products or normal wet wipes down the toilet. If you use flushable wipes, look for this symbol on the packaging to show they've passed New Zealand's flushable standards and check the manufacturers instructions as they may say that only a limited number can be flushed at any one time.



Do wipe your greasy pans out with paper towels, scrape hardened grease into the rubbish, or collect oil and grease in a sealable container and put it in your red-lid bin for rubbish.



Support available for 65 plus community members in need through Elizabeth Watson Estate Fund

Elizabeth Maree Watson generously left funds to the Stratford District Council in her will to support Stratford residents aged 65 years and over who need financial assistance.

You can apply for support for a variety of needs, like purchasing clothing, paying bills, and covering doctor's accounts. The Mayor assesses applications and determines how the funds are distributed.

Applications are confidential and can be submitted in writing at any time of the year. To apply, you must provide proof of financial need, including details of your income and bank statements.



Visit Stratford.govt.nz/FundsAndGrants for criteria and application details. If you need a hand with your application, please call us on 06 765 6099, or visit our Service Centre on Miranda Street

Rates rebates for low income homeowners

If you're a residential homeowner on a low income, you may be eligible for a maximum \$790 partial rebate on your rates.

Visit Stratford.govt.nz/RatesRebates for more information and use the online calculator to check if you're eligible.

You'll need to know the total rates you'll pay for the year from 1 July 2024 to 30 June 2025.

If you need a hand finding out if you're eligible or with your application, please call us on 06 765 6099 or visit our Service Centre on Miranda Street.

If your application is successful, any credit on your rates account can either stay there and be used for future rates payments, or you can have it refunded to you. Applications close on **30 June 2025**.



DO YOU NEED A KICK UP THE ARTS?

Apply for funding from our Creative Communities Scheme before 4 April 2025

[STRATFORD.GOV.T.NZ/CCS](https://Stratford.govt.nz/CCS) 

Library & Visitor Information Centre
Phone 06 765 5403

Monday – Friday: 8.30am – 5pm
Saturday: 9am – 1pm
Sunday & Public Holidays: Closed

Stratford Transfer Station
Phone 06 765 8500

Monday: 12pm - 5pm
Thursday: 10am - 1pm
Friday - Sunday: 12pm - 5pm

Wai o Rua - Stratford Aquatic Centre
Phone 06 765 6275

Monday – Friday: 6am – 6.30pm
Saturday: 7am – 5pm
Sunday & Public Holidays:
10am – 5pm

Glockenspiel

Performs daily at 10am, 1pm, 3pm, and 7pm

12 March 2025