

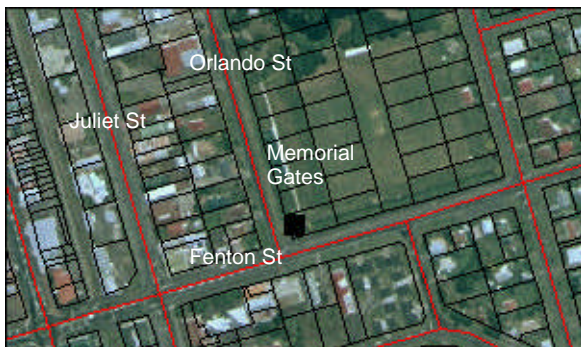


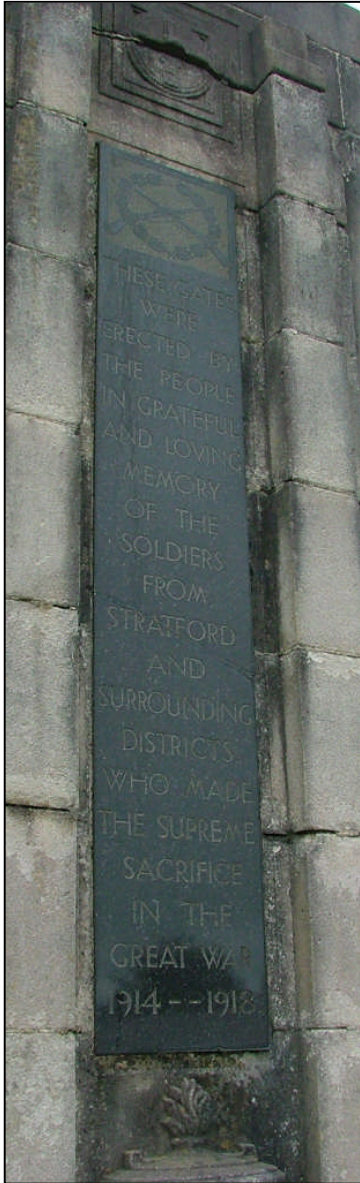
# Victoria Park Memorial Gates

**Fenton Street**

**1926**

<b>Use:</b>	Memorial	<b>Historic Value:</b>	3 out of 5
<b>Materials:</b>	Stone	<b>Architectural Value:</b>	2 out of 4
<b>NZHPT Registered:</b>	Historic Places Category II	<b>Technical Value:</b>	1 out of 2
<b>Legal Description:</b>	Secs 24-38 67-81 111-124 151-163 1039 Pt Sec 150 TN of Stratford - Victoria park Rec Res - Memorial Gates	<b>Symbolic Value:</b>	3 out of 3
		<b>Rarity Value:</b>	- out of 2
		<b>Townscape Value:</b>	1 out of 2
		<b>Group Value:</b>	- out of 2
		<b>Overall Heritage Value:</b>	<b>10 out of 20</b>





The Victoria Park Memorial Gates were constructed in 1926 and then officially opened on Anzac Day of that year. They are in commemoration of all those who fell in World War One, and were unveiled by Major General Sir Andrew Russell KCB KCMG.

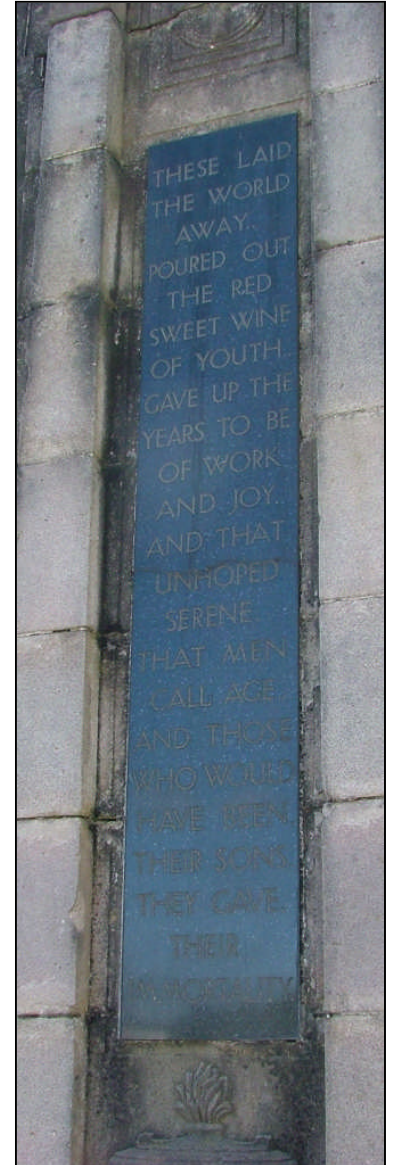
Domains Board records show that the cost of erection for these was £1100 and this money was raised by subscription by the Memorial Committee.

They are located at the entrance of Victoria Park on the corner of Fenton and Orlando Streets.

The inscriptions pictured either side read:

*These gates were erected by the people in grateful and loving memory of the soldiers from Stratford and surrounding districts who made the supreme sacrifice in the Great War.*  
(left hand pillar)

*These laid the world away, poured out the red sweet wine of youth, gave up the years to be of work and joy and that unhopd serene that men call age, and those who would have been their sons, they gave their immortality.*  
(right hand pillar)



The metal gates each have a circular medal like centerpiece (see photo on prior page). In the centre of each, reads the name of one of the theatres of battle from World War One. The outer side reads France and Gallipoli, and the inner side: Samoa and Palestine.

#### **Bibliography:**

Stratford District Council Records  
'Stratford Jubilee: 1878-1928'