



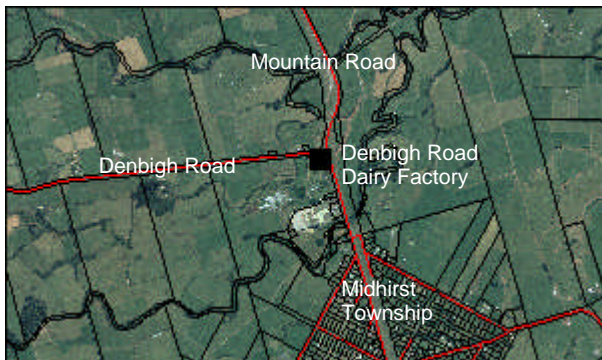
# Denbigh Road Dairy Factory

Cnr. Denbigh and Mountain Rd

1916

**Use:** None  
**Materials:** Concrete  
**NZHPT Registered:** Not registered  
**Legal Description:** -

**Historic Value:** 2 out of 5  
**Architectural Value:** - out of 4  
**Technical Value:** 1 out of 2  
**Symbolic Value:** - out of 3  
**Rarity Value:** - out of 2  
**Townscape Value:** 1 out of 2  
**Group Value:** - out of 2  
**Overall Heritage Value:** 4 out of 20



Denbigh Road was a thriving community in the late 1890s. A sawmill had commenced, a school had started with a roll of 32 pupils, and the Denbigh Road Hall had been erected.

Jack Neilson built a big concrete building on the corner of Denbigh Road in 1916, to use as a cheese factory. Mr. Neilson claimed Denbigh Road to be the first dairy factory to give the farmers a guaranteed price for their milk. The factory was built with two vats, and manufactured cheese and whey butter until the early 1920s.



The factory was later used as a Taranaki Electric - Power Board working depot while power was being taken to the whole area. It stood derelict until the 1950s, when it was re-roofed and renovated for use by the Spic and Span dry-cleaning business. In 1962, it was taken over by M.L. Hignett Ltd to be used as an engineering shop.

The factory is longer in use, but stands as a symbol of the community of Denbigh Road that once was in existence.

## **Bibliography**

*Midhirst Centennial Book*

Church, Ian, *The Stratford Inheritance*, The Heritage Press (1990) p34