

Frequently Asked Questions Relating to Local Government 2010 Elections

These FAQs relate to elections for New Plymouth District Council, Stratford District Council, South Taranaki District Council, Taranaki Regional Council and Taranaki District Health Board.

(The Electoral Officer, Barry Rollo is responsible for all of these elections.)

Section A – Taranaki Elections

[General Information](#)

[Candidates](#)

[Enrolment](#)

[Voting](#)

[Election Results](#)

[Members](#)

[Complaints](#)

Section B – Taranaki District Health Board Election

[General Information](#)

[Candidates](#)

[Voting](#)

[Members](#)

[Election Results](#)

Section A - Taranaki Elections

General Information

- [Q1 When is the next Local Government election?](#)
- [Q2 Who is running the election?](#)
- [Q3 What is the name of the Electoral Officer/Deputy Electoral Officer?](#)
- [Q4 What type of voting method do you use?](#)
- [Q5 What issues \(elections\) will we vote for?](#)
- [Q6 What is an 'at large' election and what are the election issues?](#)
- [Q7 What is the role of a councillor/community board member?](#)

Candidates

- [Q8 I want to be a candidate in these elections. What do I need to do?](#)
- [Q8a Are any candidate information evenings being held?](#)
- [Q8b Are any 'Meet the Candidates' evenings being held?](#)
- [Q9 How much will it cost me to stand?](#)
- [Q10 What qualifications and experience do I need?](#)
- [Q11 Does a criminal record affect a person standing as a candidate?](#)
- [Q12 How long is the term of the elected member?](#)
- [Q13 Do I need to be resident in the city, district or region I am standing for?](#)
- [Q14 How many offices can I stand for?](#)
- [Q15 I am a serving Police Officer. Can I stand for Council and continue to work as a Police Officer?](#)
- [Q16 How much can I spend on my campaign?](#)

Enrolment

[Q17 Where can I view the electoral roll that will be used for this election?](#)

[Q18 How do I enrol to vote in these elections?](#)

[Q19 I am a student and spend my time in different places. Where should I enrol?](#)

[Q20 I am a New Zealand Maori, do I need to enrol on the Maori roll?](#)

[Q21 How do I know whether I am enrolled?](#)

[Q22 I turn 18 on Election Day. Can I vote?](#)

[Q23 We own a business in your area and pay rates, but we don't live in your area – do we get a say in the local elections?](#)

[Q24 I own a property in the district but it is not my fulltime residence. How do I get on the Ratepayer Electoral Roll?](#)

[Q25 Is it a postal vote and will I be sent my voting documents in the mail?](#)

Voting

[Q26 I got my voting documents but my partner didn't receive theirs.](#)

[Q27 I didn't get my voting documents so I called and got a special vote. Now I have two documents which one should I use?](#)

[Q28 I received voting documents for a person that I have Power of Attorney for. Can I vote for them?](#)

[Q29 I have received voting documents for someone overseas. What should I do with the documents?](#)

[Q30 I have received voting documents for an elderly parent/person who is unable to vote. What should I do with the documents?](#)

[Q31 I received voting documents that do not belong to me and I don't know these people or where they have gone.](#)

[Q32 What is that barcode that I can see through the return envelope or on the front of the voting document?](#)

[Q33 How do you ensure the secrecy of my vote?](#)

[Q34 Do I have to vote? I don't know any of these candidates](#)

[Q35 Do I have to post my voting document back?](#)

[Q36 I have lost my return envelope.](#)

[Q37 I am on the Unpublished Parliamentary roll and I want a special vote please.](#)

[Q38 I didn't receive my voting paper, how do I obtain a special vote?](#)

[Q39 I spoiled my voting documents / I have made a mistake on my documents. What can I do?](#)

[Q40 Where can I have a special vote?](#)

[Q41 I am going away and will not be here when the voting documents are posted out.](#)

[Q42 Do I have to vote for all the candidates for any issue?](#)

[If I don't vote for all the candidates or all the issues on my voting document, will all my votes be informal?](#)

[Q43 Why can't I vote for a certain candidate who is standing for a different ward, community board or other issue?](#)

[Q44 Why have some issues on my voting documents been voided?](#)

[Q45 I have received two voting documents](#)

[Q46 Do all the staff working on the election know who I voted for?](#)

[Q47 Can I help someone fill out their voting documents?](#)

[Q48 What happens to all the voting documents after the elections?](#)

[Q49 Do I get a vote for the DHB?](#)

[Q50 What is STV and how do I vote in an STV election?](#)

[Q51 What about FPP?](#)

Election Results

[Q52 When will we know the results of the election?](#)

[Q53 How will I find out the results of the election?](#)

[Q54 What do I need to do if I want to challenge the results of the election?](#)

Members

[Q55 When do elected members take up their roles?](#)

[Q56 Who are elected members responsible to?](#)

[Q57 Do elected members get paid and if so how much?](#)

[Q58 Would being an elected member take up much time?](#)

[Q59 How many elected members are there?](#)

Complaints

[Q60 I have a complaint about electoral signage?](#)

Section B - Taranaki District Health Board Elections

General Information

[Q1 What is a DHB?](#)

[Q2 How many DHBs are there in New Zealand?](#)

[Q3 How long have we had DHBs?](#)

[Q4 What do DHBs do?](#)

[Q5 How many members are there on a DHB?](#)

[Q6 Who appoints the appointed members?](#)

[Q7 How are the Chairperson and Deputy Chairperson decided?](#)

[Q8 When do current elected board members relinquish their positions?](#)

[Q9 How soon after the election are people appointed by the Minister?](#)

[Q10 How long is the term of an elected DHB Board member?](#)

[Q11 How long is the term of an appointed DHB Board member?](#)

[Q12 What do Board members do?](#)

[Q13 Who runs these elections?](#)

[Q14 Who pays for the DHB Election?](#)

[Q15 When are the elections this year?](#)

[Q16 Can the public attend DHB meetings?](#)

[Q17 Does the DHB board appoint staff members?](#)

Candidates

[Q18 How much are DHB members paid?](#)

[Q19 Who is eligible to stand for the DHB?](#)

[Q20 Do you have to be resident in the DHB area to stand for that board?](#)

[Q21 How many boards can I stand for?](#)

[Q22 I work for a DHB. Can I stand?](#)

[Q23 When do nominations open?](#)

[Q24 How much can I spend on my campaign?](#)

[Q25 How are candidates' possible conflicts of interest handled?](#)

Voting

[Q26 Is there any information available to all electors about the people who are standing?](#)

[Q27 Who is eligible to be an elector?](#)

[Q28 I have more than one property in different board districts. Can I vote for a member in each of those DHBs?](#)

[Q29 What method of voting is used?](#)

[Q30 What is STV and how do I vote in an STV election?](#)

Members

[Q31 How much time would I need to spend on DHB work if I was elected?](#)

[Q32 Do I need any special skills to be a board member?](#)

[Q33 What are DHB advisory committees?](#)

[Q34 How are the members of these committees decided?](#)

[Q35 Are there any provisions to ensure that the DHB board membership is representative of the various ethnic groups in New Zealand?](#)

[Q36 What about women board members?](#)

Results

[Q37 When will the results be known?](#)

General Information

<i>Questions</i>	<i>Answers</i>
Q1 <i>When is the next Local Government election?</i>	Election Day is Saturday 9 October and voting closes at noon on that day. The voting period starts on Friday 17 September.
Q2 <i>Who is running the election?</i>	The Electoral Officer has full responsibility for running the election.
Q3 <i>What is the name of the Electoral Officer/Deputy Electoral Officer?</i>	The Electoral Officer is Barry Rollo, phone 06 759 6109 or 027 243 1797; email rollob@npdc.govt.nz . The Deputy Electoral Officer is Helen Begg, phone 06 759 6102; email beggh@npdc.govt.nz .
Q4 <i>What type of voting method do you use?</i>	All councils are using FPP (First Past the Post). The Taranaki District Health Board is using STV (Single Transferable Vote).
Q5 <i>What issues (elections) will we vote for?</i>	New Plymouth District – you will be voting for the Mayor, councillors, community board members (if you are in a community board area), regional councillors and district health board members. Stratford District Council – you will be voting for the Mayor, councillors, regional councillor and district health board members. South Taranaki District Council – you be voting for the Mayor, councillors, community board members, regional councillors and district health board members.
Q6 <i>What is an 'at large' election and what are the election issues?</i>	An 'at large' election is where all voters in the district/region vote for the candidates. The Mayor is elected at large i.e. the Mayor is elected by all voters in the district. The Taranaki District Health Board is elected 'at large'. For the New Plymouth District Council, Stratford District Council and South Taranaki District Council, councillors are elected by voters in wards and community board members are elected by voters in the community board area. Regional councillors are elected on a constituency basis.

General Information

Questions

Answers

The election issues are:

New Plymouth District:

Mayor (elected 'at large')

New Plymouth City Ward – 10 councillors

North Ward – two councillors

South-West Ward – two councillors

Clifton Community Board – four members

Kaitake Community Board – four members

Inglewood Community Board – four members

Waitara Community Board – four members

Taranaki Regional Council, North Taranaki Constituency – two councillors

Taranaki Regional Council, New Plymouth Constituency – five councillors

Stratford District:

Mayor (elected 'at large')

Rural Ward - four councillors

Urban Ward - five Councillors

Taranaki Regional Council, Stratford Constituency – one councillor

Horizons Regional Council, Ruapehu Constituency – one councillor

South Taranaki District:

Mayor (elected 'at large')

Egmont Plains Ward – three councillors

Eltham Ward – two councillors

Tangahoe Ward – one councillor

Hawera/Normanby Ward – four councillors

Patea Ward – two councillors

Egmont Plains Community Board - four members

Eltham Community Board – four members

Hawera/Tangahoe Community Board:

- Hawera/Normanby subdivision – three members

- Tangahoe subdivision – one member

Patea Community Board – four members

Taranaki Regional Council, South Taranaki Constiency – three councillors

Taranaki District Health Board

Seven board members (elected 'at large').

General Information

Questions

Q7 *What is the role of a councillor/community board member?*

Answers

A Councillor:

- Participates in strategic planning for the whole district/region
- Develops policy across a wide range of activities and services
- Represents the district/region at functions as required.
- Reviews and develops bylaws for the district/region.
- Advocates on a wide range of issues.
- Coordinates and forms partnerships with other spheres of government and other agencies.
- Participates in the appointment and performance review of the Chief Executive Officer.
- Acts on all these matters within a legislative and regulatory framework, and setting a budget and rates.

A Community Board member:

- Promotes residents' issues and initiatives to the board and the district council.
- Monitors the provision of council services and advocates changes as necessary.
- Engages in community development activities in conjunction with Council officers.
- Takes a proactive stance anticipating strategies and policies that may be needed.
- Represents the community to other agencies.
- Promotes the role of the community board in the wider community.
- Works cooperatively with the Council.

Candidates

Questions

Answers

Q8 *I want to be a candidate in these elections. What do I need to do?*

You must be a New Zealand citizen and your name must be on the Parliamentary Electoral Roll.

You will need to have two people who live in the area of the election you are standing for to nominate you – e.g. if you stand for the XYZ Ward, they will need to reside within that Ward. (Please note the candidate does not need to reside in the district or ward in which they are standing.)

The nominators must also be on the Parliamentary Electoral Roll at the address they are listed on the nomination paper (which must be in the area that they are nominating the person for).

Q8a *Are any candidate information evenings being held?*

New Plymouth District

Wednesday 14 July 2010 at 7.30pm - New Plymouth District Council Civic Centre, Liardet Street, New Plymouth

South Taranaki District

Thursday 15 July 2010 at 7.30pm – South Taranaki District Council Administration Building, Albion Street, Hawera

Stratford District

Monday 19 July 2010 at 7.30pm – Stratford District Council Administration Building, Miranda Street, Stratford

Q8b *Are any 'Meet the Candidates' evenings being held?*

Thursday 6 August at 1.30pm at the Church in Lawry Street (Contact Keith Allum, phone 753 2185)

Monday 6 September at 5.30pm at the New Plymouth District Council Civic Centre (Contact Positive Ageing Trust)

Tuesday 14 September at 7.30pm at the Inglewood Town Hall (Contact Jim Shephard, phone 756 7761)

Q9 *How much will it cost me to stand?*

You will need to pay a deposit of \$200 GST inclusive.

Your nomination must be received by noon on 20 August.

If you pay the deposit by cheque and if it is dishonoured after nominations close, your nomination will not be accepted.

Candidates

Questions	Answers
	<p>You will receive your deposit back if you poll more than 25% of the lowest polling successful candidate (for FPP elections) or greater than 25% of the final quota as determined by the last iteration (for STV).</p> <p>Would you like me to send out a nomination form?</p> <p>Send out candidate pack consisting of nomination form, candidate information book and other relevant material.</p>
Q10 <i>What qualifications and experience do I need?</i>	Nothing formal. Elected members come from all walks of life and generally have a will/desire to serve the community.
Q11 <i>Does a criminal record affect a person standing as a candidate?</i>	No, not at all for city, district and regional council elections.
Q12 <i>How long is the term of the elected member?</i>	Three years.
Q13 <i>Do I need to be resident in the city, district or region I am standing for?</i>	No, but you must be on the Parliamentary Electoral Roll and be a New Zealand Citizen
Q14 <i>How many offices can I stand for?</i>	<p>You can stand for mayor, district-wide councillor or ward councillor and community board member. However, if you win more than one you will take up the highest ranked position.</p> <p>You can not stand for both a constituent district or city council and their regional council.</p> <p>You can not stand for more than one District Health Board.</p>
Q15 <i>I am a serving Police Officer. Can I stand for Council and continue to work as a Police Officer?</i>	The Policing Act 2008 has been amended and the restrictions on police officers standing for election in local authority elections no longer applies. You should check for police internal policies.
Q16 <i>How much can I spend on my campaign?</i>	If you stand for more than one position, the amount you can spend is the highest amount for one position. You cannot add positions together to allow you to spend more than the limit.

Candidates

Questions

Answers

All candidates are required to lodge an electoral expenses and donations return within 55 days after the results are officially notified. If this is not done it is possible that a non return will be advised to the NZ Police. This return needs to be made before a candidate deposit is refunded.

New Plymouth District

Mayoral candidate - \$40,000

Council candidate City Ward - \$30,000

Council candidate North Ward - \$14,000

Council candidate South-West Ward - \$14,000

Community board candidate Clifton - \$3,500

Community board candidate Inglewood - \$7,000

Community board candidate Kaitake - \$3,500

Community board candidate Waitara - \$7,000

Stratford District

Mayoral candidate – \$7,000

Council candidate Stratford Rural Ward - \$3,500

Council candidate Stratford Urban Ward - \$7,000

South Taranaki District

Mayoral candidate - \$20,000

Council candidate Egmont Plains Ward - \$7,000

Council candidate Eltham Ward - \$3,500

Council candidate Hawera-Normanby Ward - \$7,000

Council candidate Patea Ward - \$3,500

Council candidate Eltham Tangahoe - \$3,500

Community board candidate Egmont Plains - \$7,000

Community board candidate Eltham - \$3,500

Community board candidate Hawera-Normanby - \$7,000

Community board candidate Patea - \$3,500

Community board candidate Tangahoe - \$3,500

Enrolment

Questions

Q17 *Where can I view the electoral roll that will be used for this election?*

Answers

New Plymouth District

- New Plymouth District Council, Civic Centre, Liardet Street, New Plymouth
- Bell Block Library and Service Centre, Parklands Avenue, Bell Block
- Inglewood Library and Service Centre, Rata Street, Inglewood
- Waitara Library and Service Centre, 17 Queen Street, Waitara
- Puke Ariki Library, Ariki Street, New Plymouth
- Oakura Library, Pitcairn Street, Oakura
- Urenui Library, Takiroa Street, Urenui

Stratford District

- Stratford District Council Administration Building, Miranda Street, Stratford
- Stratford Library, Miranda Street, Stratford

South Taranaki District

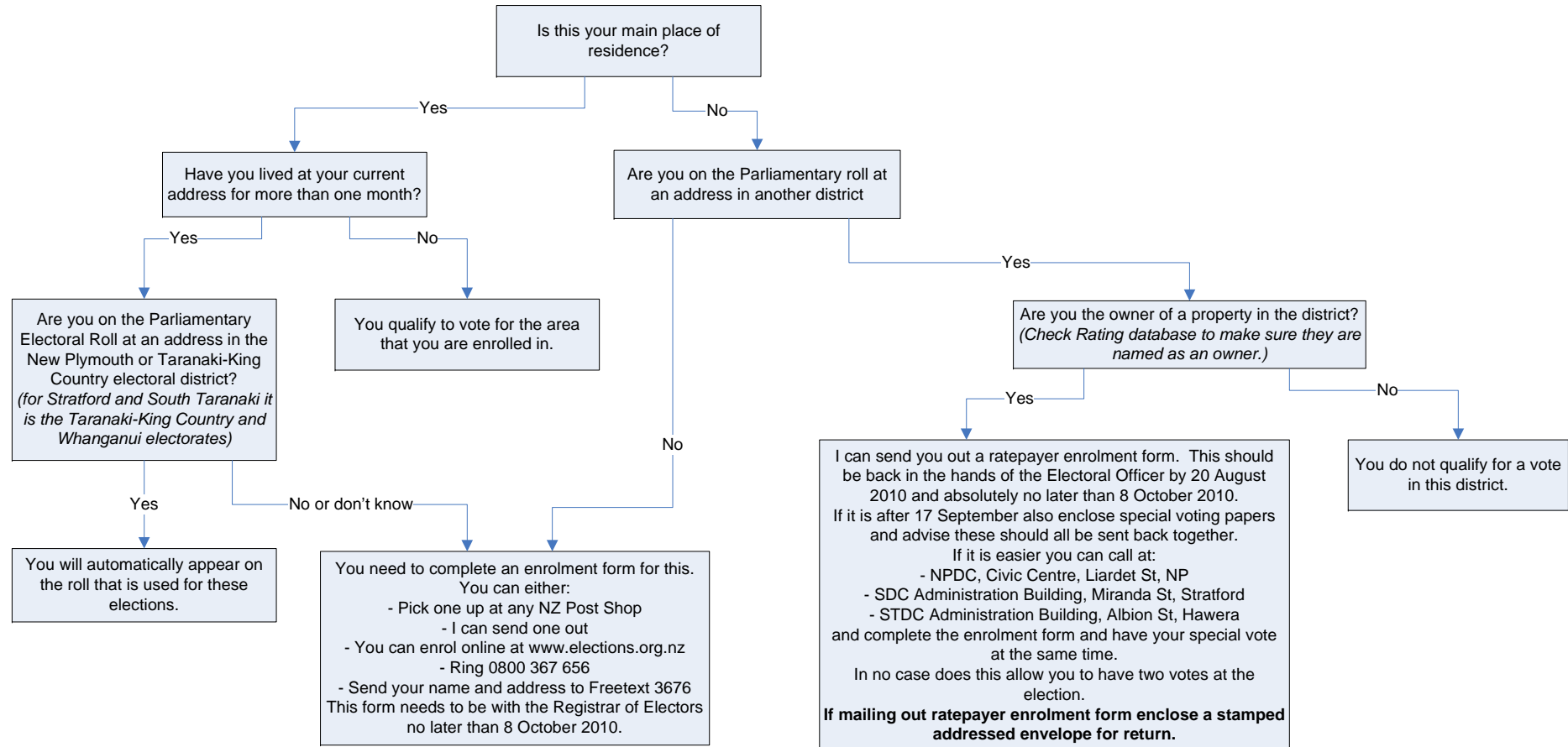
- South Taranaki District Council Administration Building, Albion Street, Hawera
- Hawera Library Plus, High Street, Hawera
- Eltham Library Plus, High Street, Eltham
- Manaia Library Plus, South Road, Manaia
- Opunake Library Plus, Tasman Street, Opunake
- Patea Library Plus, Egmont Street, Patea
- Kaponga Library Plus, 42 Victoria Street, Kaponga
- Waverley Library Plus, Weraroa Road, Waverley

Enrolment

Questions

Answers

Q18 How do I enrol to vote in these elections?



If issue becomes difficult refer to Electoral Officer, Barry Rollo phone 06-759 6109 (NPDC extn 8809).

Q19 I am a student and spend my time in different places. Where should I enrol?

You should enrol where you spend the greater part of your time.

Enrolment

Questions

Q20 *I am a New Zealand Maori, do I need to enrol on the Maori roll?*

Answers

Not necessarily. If you are enrolling for the first time you can decide whether you want to go on the Maori roll or the General roll by signing the appropriate panel on the Parliamentary Elector Enrolment form.

However, if you have already made that choice you will have to wait until the next Maori Option period to change. That will be in 2012.

The local authority electoral roll combines names from the Maori roll and the General roll – there are no separate rolls.

Q21 *How do I know whether I am enrolled?*

The Electoral Enrolment Centre will be undertaking a roll update campaign for the Parliamentary Electoral Roll which forms the basis of our roll for the local authority election.

This will start on **5 July 2010** and if you did not receive a letter in the post the chances are you are not enrolled or your details are incorrect.

Q22 *I turn 18 on Election Day. Can I vote?*

Yes, but you need to make sure you have enrolled which you can do provisionally from the age of 17 and it automatically changes when you turn 18.

You will also need to apply for a special vote.

You can do both if you call at:

- New Plymouth District Council, Civic Centre, Liardet Street, New Plymouth.
- Stratford District Council Administration Building, Miranda Street, Stratford.
- South Taranaki District Council Administration Building, Albion Street, Hawera.

Q23 *We own a business in your area and pay rates, but we don't live in your area – do we get a say in the local elections?*

Yes, subject to being eligible to become enrolled as a ratepayer elector and becoming enrolled.

Send out Ratepayer enrolment form and return envelope. Tell them this should be in the hands of the Electoral Officer by 20 August 2010 and absolutely no later than 8 October 2010.

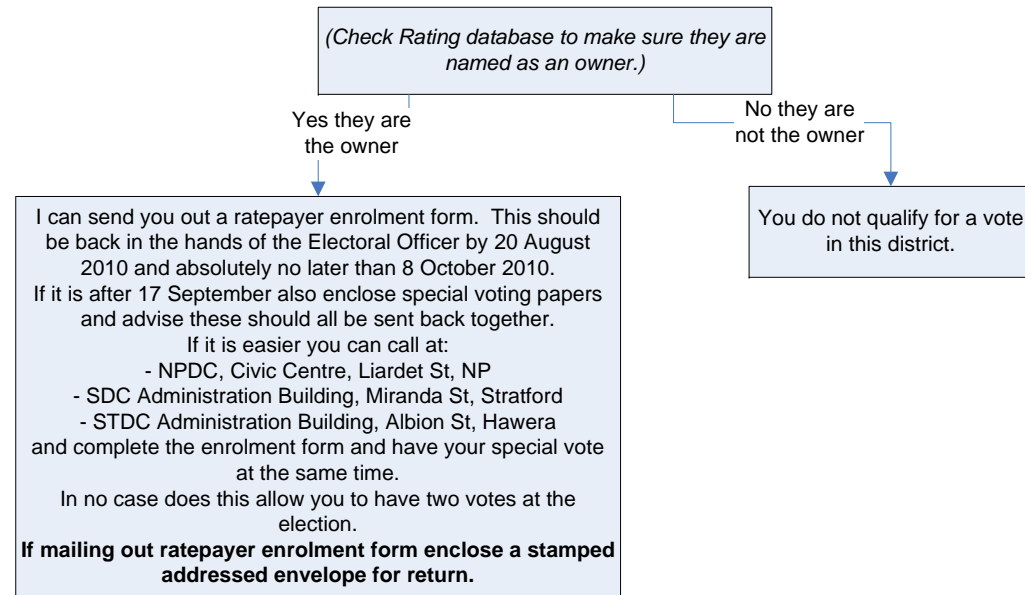
If issue becomes difficult refer to Electoral Officer, Barry Rollo phone 06-759 6109 (NPDC extn 8809).

Enrolment

Questions

Answers

Q24 *I own a property in the district but it is not my fulltime residence. How do I get on the Ratepayer Electoral Roll?*



If issue becomes difficult refer to Electoral Officer, Barry Rollo phone 06-759 6109 (NPDC extn 8809).

Voting

Questions

Q25 *Is it a postal vote and will I be sent my voting documents in the mail?*

Answers

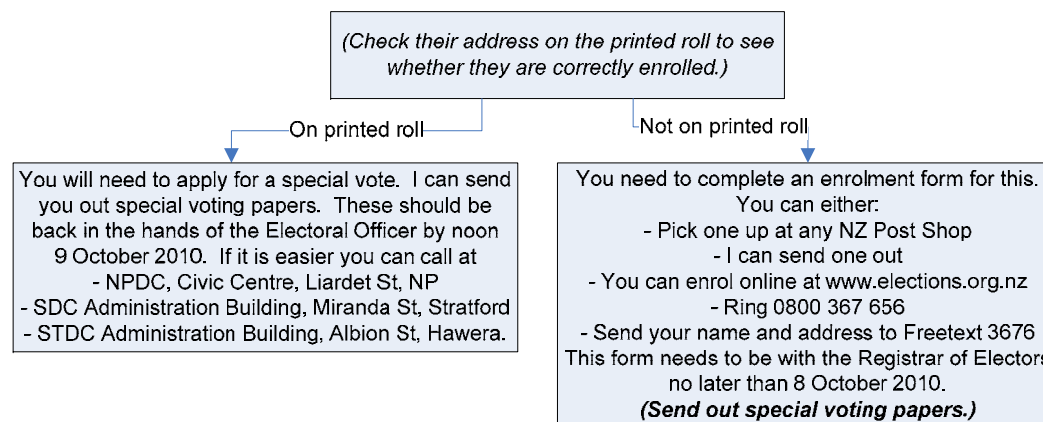
All local authority elections will be conducted by postal vote. Voting documents will be delivered by NZ Post between Friday 17 September and Wednesday 22 September.

Q26 *I got my voting documents but my partner didn't receive theirs.*

Before Wednesday 22 September

Please wait until the mail has been delivered on Wednesday 22 September. If they are not received then please call back.

After mail delivery Wednesday 22 September



If issue becomes difficult refer to Electoral Officer, Barry Rollo phone 06-759 6109 (NPDC extn 8809).

Q27 *I didn't get my voting documents so I called and got a special vote. Now I have two documents which one should I use?*

Use the original and destroy the special vote.

Take details and advise Electoral Officer, Barry Rollo – email rollob@npdc.govt.nz.

Q28 *I received voting documents for a person that I have Power of Attorney for. Can I vote for them?*

No – Power of Attorney does not apply to voting for that person.

Voting

Questions

Answers

Q29 *I have received voting documents for someone overseas. What should I do with the documents?*

If they are overseas, you could fast post them to the person or destroy them if that is not practicable.

Q30 *I have received voting documents for an elderly parent/person who is unable to vote. What should I do with the documents?*

If they are for an elderly parent who is unable to vote please destroy them by ripping/cutting them up.

Q31 *I received voting documents that do not belong to me and I don't know these people or where they have gone.*

Write GNA (Gone No Address) on the envelope and put them back in the mail.

Q32 *What is that barcode that I can see through the return envelope or on the front of the voting document?*

It is a legal requirement to scan the barcode number to mark the roll that you have voted so we can ensure that we do not receive two votes from the same person.

Q33 *How do you ensure the secrecy of my vote?*

Envelopes containing a voting document can not be opened until there is a JP present. The JP is required to sign off that the processes used by the Electoral Officer to meet the legal requirements.

The voter's name is not on the voting document.

When the envelope is opened the only thing the Electoral Officer is looking for is that the vote for each election is valid.

This means that for **FPP** they are making sure that the voter's intention is clear and they have not ticked or marked more than the number of candidates that they are electing.

For **STV** it is to make sure that no preference numbers are used more than once or omitted, e.g. 1, 2, 3, 3, 4, 5, and that there is always a number one marked against a candidate's name. It should be like this: 1, 2, 3, 4, 5, 6, etc, in numerical order up to as many preferences the voter wishes to vote for.

Voting

Questions

Q34 *Do I have to vote? I don't know any of these candidates*

Answers

No you don't have to vote. You also don't have to vote for all candidates or for all elections. But your vote is important because the people elected will be responsible for making decisions about what happens in your community for the next three years.

To help you get to know about the candidates:

- There may be candidate meetings if you wish to go and hear what policies the different candidates are advocating for. These meetings are organised by local service clubs and advertised in the paper.
- Additionally there is a candidate profile booklet that comes out with the voting documents in which there is a photo and a statement from candidates.

Q35 *Do I have to post my voting document back?*

You can post your voting document but make sure you have them in the mail by Wednesday 6 October to make sure they get back to us in time (by noon Saturday 9 October).

However, you can also deliver your voting document to one of our voting boxes up to noon on Saturday 9 October. Voting boxes are located at:

- New Plymouth District Council, Civic Centre, Liardet Street, New Plymouth.
- Stratford District Council Administration Building, Miranda Street, Stratford.
- South Taranaki District Council Administration Building, Albion Street, Hawera.

Q36 *I have lost my return envelope.*

You can use an envelope of your own and put the return address on which is:
Freepost 226850
The Electoral Officer
Private Bag 2025
New Plymouth Central
New Plymouth 4342

Or you can deliver it to:

- New Plymouth District Council, Civic Centre, Liardet Street, New Plymouth.
- Stratford District Council Administration Building, Miranda Street, Stratford.
- South Taranaki District Council Administration Building, Albion Street, Hawera.

Voting

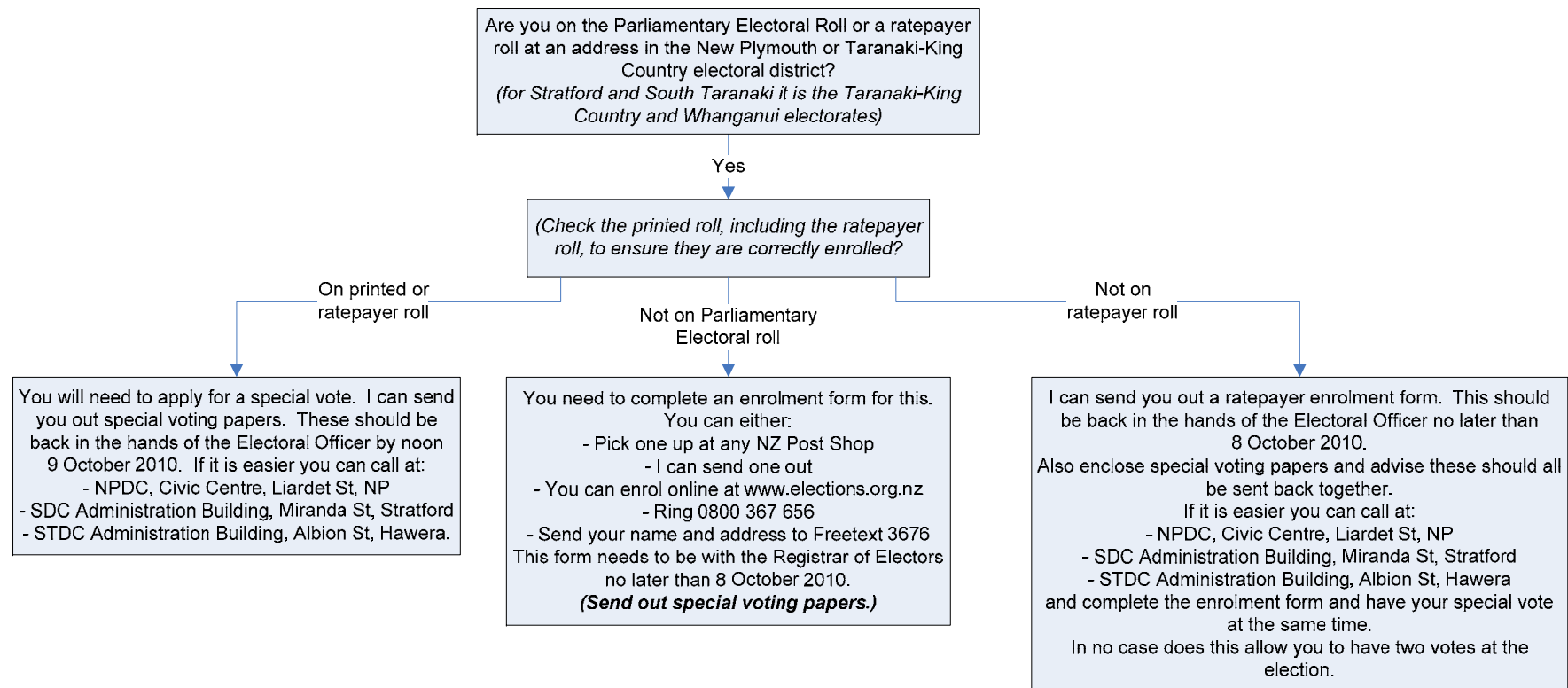
Questions

Answers

Q37 *I am on the Unpublished Parliamentary roll and I want a special vote please.*

Electoral Officer to answer this enquiry, phone 06-759 6109 (NPDC extn 8809).

Q38 *I didn't receive my voting paper, how do I obtain a special vote?*



If issue becomes difficult refer to Electoral Officer, Barry Rollo phone 06-759 6109 (NPDC extn 8809).

Voting

Questions

Answers

Q39 *I spoiled my voting documents / I have made a mistake on my documents. What can I do?*

If you can amend it so that your voting intention is clear then do so and initial the changes. However we can issue you with a special voting document if you would rather.

Put the caller through to the person issuing the special vote.

Q40 *Where can I have a special vote?*

New Plymouth District Council, Civic Centre, Liardet Street, New Plymouth.
Stratford District Council Administration Building, Miranda Street, Stratford.
South Taranaki District Council Administration Building, Albion Street, Hawera.

Q41 *I am going away and will not be here when the voting documents are posted out.*

Refer to the Electoral Officer, Barry Rollo phone 06-759 6109 (NPDC extn 8809) who may be able to organise for the voting document to be sent to the voter)

Q42 *Do I have to vote for all the candidates for any issue?
If I don't vote for all the candidates or all the issues on my voting document, will all my votes be informal?*

Under FPP you can vote for as many candidates as you want but not more than the instruction states on the voting document. So if you are electing 5 councillors then you can vote for **up to** five candidates.

With STV you can vote for all or as many candidates as you wish but these must be in order of your preference

You can decide not to vote for one or more of the different elections on your voting document. This does not however invalidate all your other votes.

Q43 *Why can't I vote for a certain candidate who is standing for a different ward, community board or other issue?*

You can only vote in the ward or constituency of a district/region in which you reside and are an elector of. You cannot vote for a candidate for the same district or region who is standing in another ward or constituency because you are not an elector of that ward or constituency.

You may have to describe the boundaries and tell the caller where the address they are claiming the vote for fits into this.

Q44 *Why are there blank columns on my voting document?*

You are only entitled to vote for any issue once and only for one District Health Board no matter how many different areas you live in. As you are a ratepayer elector the issues that you are not entitled to vote for have been left off leaving blank columns.

If still not convinced refer to Electoral Officer, Barry Rollo on 06-759 6109 (NPDC extn 8809) to ensure correct voting issues have been included.

Voting

Questions

Answers

Q45 *I have received two voting documents*

Refer to the Electoral Officer, Barry Rollo phone 06-759 6109 (NPDC extn 8809).

Q46 *Do all the staff working on the election know who I voted for?*

No, your vote remains secret under the required roll scrutiny and counting procedures.

Q47 *Can I help someone fill out their voting documents?*

Under the Local Electoral Act 2001, you cannot interfere or influence any person as to how they can vote.

If authorised by a voter who is physically impaired, visually impaired or for whom English is a second language, a person can assist them to vote as directed by the voter.

Q48 *What happens to all the voting documents after the elections?*

They are delivered to the District Court and kept for 21 days so that the Court can access them should there be any application for recount or petition for inquiry.

After 21 days the court is responsible for destroying them

Q49 *Do I get a vote for the DHB?*

Yes, if you are a resident elector. Ratepayer electors cannot vote for DHB elections.

Please note that DHB elections are conducted under STV and so you will exercise your vote by ranking your preferred candidates.

Q50 *What is STV and how do I vote in an STV election?*

STV stands for Single Transferable Vote. STV is a preferential system of voting where you can rank as few or as many candidates as you like. It is a single vote which can be transferred between candidates to ensure the vote contributes to the election or a least one candidate and is not wasted. If a popular candidate does not need all the votes he or she receives, a proportion is transferred to the voter's next preference. On the other hand, if a candidate is not popular and receives few votes, those votes are transferred to a voter's next preference.

For more information about STV go to www.stv.govt.nz.

To exercise an STV vote, start by writing the number 1 in the box next to the candidate you **most** want to be elected. Write the number 2 next to your **second most** preferred candidate and so on 3, 4, 5 etc.

You can write as many preferences or as few as you like up to however many candidates are standing for that election.

Voting

Questions

Answers

You must write the number 1 for your vote to be counted.

Do not write the same number more than once, e.g. 1, 2, 3, 3, 4, 5, and do not miss a number from your preferences, e.g. 1, 2, 4, 5, 6.

Q51 *What about FPP?*

This is the First Past the Post voting system. The candidate or candidates that gets the most votes wins.

You should mark those you want to vote for with a tick in the circle. Do not vote for more than the number of candidates shown in the instructions.

Election Results

Questions

Q52 *When will we know the results of the election?*

Answers

Progress and preliminary results will be announced as soon as possible after noon on Saturday 9 October.

The official results will be announced when special votes have been checked, but in the week of 11-15 October.

Q53 *How will I find out the results of the election?*

Candidates

Will be advised as soon as possible after preliminary results are known. This may be by email or fax.

The Voters

Preliminary Results will be released to the media and placed on our websites as soon as possible after noon on Saturday 9 October:

- New Plymouth District Council – www.newplymouthnz.com
- Stratford District Council – www.stratford.govt.nz
- South Taranaki District Council – www.stdc.co.nz
- Taranaki Regional Council – www.trc.govt.nz

For all Council election results, go to Local Government Online – www.elections2010.co.nz.

Q54 *What do I need to do if I want to challenge the results of the election?*

Put caller through to the Electoral Officer, Barry Rollo phone 06-759 6109 (NPDC extn 8809).

Members

Questions

Answers

Q55 *When do elected members take up their roles?*

Elected members take up office the day after the official result has been declared. However, they cannot act until they have sworn the oath of office which is usually at the first meeting of council. This first meeting is usually held as soon as practicable after the final election results are known.

District Health Board members take up office 58 days after election day.

Q56 *Who are elected members responsible to?*

Ultimately the elected members' final responsibility is to the local community. The Minister of Local Government and the Auditor-General do have a role in ensuring that councils follow the law. All District Health Board members are accountable to the Minister of Health.

Q57 *Do elected members get paid and if so how much?*

This is set by the Remuneration Authority. Some expenses are also reimbursed. The current remuneration is:

New Plymouth District Council

Mayor	\$103,910
Deputy Mayor	\$45,918
Committee Chair	\$42,385
Councillor	\$29,881
Community Board Chair	\$12,185
Community Board Member	\$5,828

Stratford District Council

Mayor	\$55,479
Deputy Mayor	\$26,870
Councillor	\$13,434

South Taranaki District Council

Mayor	\$72,197
Deputy Mayor	\$26,305
Chair, Environment & Hearings	\$26,111
Councillor/Community Board Chair	\$18,665
Councillor/Community Board appointee	\$16,502
Councillor/Member, Environment and Hearings Committee	\$20,555
Councillor	\$13,797
Egmont Plains and Patea Community Board chairs	\$6,694
Community Board members	\$4,611

Members

Questions

Answers

Taranaki Regional Council

Chair	\$82,550
Deputy Chair	\$38,166
Committee Chair	\$38,166
Councillor	\$27,198

District Health Board members are paid on the basis of the Government's Fees framework.

Q58 *Would being an elected member take up much time?*

The time commitment varies depending on the role and the size of the local authority/community you are representing.

New Plymouth District Council

The present Mayor finds it a full time commitment.

Councillors' time varies but the present Council meets on a six weekly meeting cycle – one Council meeting, two committee meetings and a number of subcommittees. On average councillors attend four meetings every six weeks.

There are also a number of workshops held throughout the year – during 2009 there were 14 half-day workshops.

Meetings have traditionally been held on Tuesdays at 4.30pm. Workshops are held during the day.

Community board members attend one meeting every six weeks.

In addition to the meetings elected members must spend time consulting with the community and preparing for meetings.

There is also an extensive transition training programme run following the elections – in 2007 the programme was for six half-day and three full-day sessions.

Members

Questions

Answers

Stratford District Council

The present Mayor estimates 20 hours per week to carry out mayoral responsibilities.

Councillors time depends on the number of committees they are appointed to. The regular Council meeting is held on the second Tuesday of the month at 4pm and committee meetings on the fourth Tuesday at 3pm. An estimate of the average weekly workload is at least five hours.

South Taranaki District Council

The present Mayor estimates 20 hours per week to carry out mayoral responsibilities.

Councillors time depends on the number of committees they are appointed to. The regular six-weekly Council meetings vary in length from half an hour to three hours. An estimate of the average weekly workload is at least ten hours. There are also regular workshops throughout the year.

An estimate of the average workload for community board members is up to ten hours per week.

District Health Board

District Health Board members are remunerated on the basis of 60 days work each year.

Q59 How many elected members are there?

New Plymouth District Council

Ward	Number of councillors
City	10
North	2
South-West	2
Total	14
Community Board	Number of members
Clifton	4
Inglewood	4
Kaitake	4
Waitara	4
Total	16

Members

Questions

Answers

Stratford District Council

Ward	Number of councillors
Stratford Rural	4
Stratford Urban	5
Total	9

South Taranaki District Council

Ward	Number of councillors
Egmont Plains	3
Eltham	2
Hawera-Normanby	4
Patea	2
Tangahoe	1
Total	12
Community Board	Number of members
Egmont Plains	4
Eltham	4
Hawera-Tangahoe	Hawera/Normanby 3 Tangahoe 1
Patea	4
Total	16

Members

Questions

Answers

Taranaki Regional Council

Constituency	Number of members
New Plymouth	5
North Taranaki	2
Stratford	1
South Taranaki	3

Horizons Regional Council

Constituency	Number of members
Ruapehu	1

Taranaki District Health Board

Elections held at large	Number of members
Taranaki	7

Complaints

Questions

Q60 *I have a complaint about Electoral signage?*

The signs don't have the required authorisation on them.

The signs have been pulled over.

The signs are bigger than they should be.

What locations can signs be erected?

When can they be erected and when must they be pulled down?

Answers

The signs don't have the required authorisation on them.

Election advertising, using any media, must identify the person under whose authority it has been produced. The publication of any advertisements (in any newspaper, periodical, notice, poster, pamphlet, handbill, billboard or card, or broadcast over radio or television) for candidates requires the written authorisation of the candidate or the candidate's agent. The advertisement must contain a statement setting out the true name of the person or persons for whom, or at whose direction, it is published and the street address (not a PO Box) of his or her residence or business. This applies during the candidate's entire campaign.

The signs have been pulled over.

It is the responsibility of the candidate to maintain his/her signs

The signs are bigger than they should be.

New Plymouth District Council

Refer the caller to the New Plymouth District Council's Regulatory Services Team.

Stratford District Council

Refer the caller to the Stratford District Council's Compliance Officer phone 06 765 6099.

South Taranaki District Council

Refer the caller to the South Taranaki District Council's Group Manager Environmental Services phone 06 278 0555 or 0800 111 323

What locations can signs be erected?

New Plymouth District

Provided that the related New Plymouth District Plan rules and the Building Act are complied with, temporary signs for electioneering may be erected on private land throughout the District.

Stratford District

Provided that the related Stratford District Council District Plan rules and the Building Act are complied with, temporary signs for electioneering may be erected on private land throughout the district.

Complaints

Questions

Answers

South Taranaki District

Temporary signs for electioneering may be erected throughout the South Taranaki District with the permission of the Council's Group Manager Environmental and Information Services. Signs may not be erected within Council parks and reserves; and/or other Council property. Council road reserve locations will be considered on a case by case basis.

When can they be erected and when must they be pulled down?

Signs may be erected at any time and may remain in place up to and including election day.

General

<i>Questions</i>	<i>Answers</i>
Q1 <i>What is a DHB?</i>	District Health Boards are Crown entities responsible for providing, or funding the provision of, publicly funded health and disability support services for the population of a specific geographic area.
Q2 <i>How many DHBs are there in New Zealand?</i>	Twenty.
Q3 <i>How long have we had DHBs?</i>	Since 1 January 2001.
Q4 <i>What do DHBs do?</i>	DHBs' statutory objectives include: <ul style="list-style-type: none">• Improving, promoting and protecting the health of communities.• Promoting the integration of health services, especially primary and secondary care services.• Promoting effective care or support of those in need of personal health services or disability support.• Promoting the inclusion and participation in society and independence of people with disabilities.• Reducing health disparities by improving health outcomes for Maori and other population groups.• Fostering community participation in health improvement, and in planning for the provision of health services and for a significant changes to the provision of services.• Exhibiting a sense of environmental responsibility by having regard to the environmental implications of their operations.
Q5 <i>How many members are there on a DHB?</i>	Up to 11 members sit on each board - seven of these are elected while up to four are appointed.
Q6 <i>Who appoints the appointed members?</i>	The Minister of Health. In making appointments, the Minister looks at each board's elected membership and any gaps in skills, expertise, experience and representation that may exist. The Minister then seeks to appoint people who can fill these gaps.
Q7 <i>How are the Chairperson and Deputy Chairperson decided?</i>	The Minister of Health appoints members to these positions and they may be elected or appointed members.

General

<i>Questions</i>	<i>Answers</i>
Q8 <i>When do current elected board members relinquish their positions?</i>	When the new elected members assume their roles. The new board members take up their role 58 days after election day.
Q9 <i>How soon after the election are people appointed by the Minister?</i>	Usually at the same time as elected members, or as soon after this as possible.
Q10 <i>How long is the term of an elected DHB Board member?</i>	Three years. Elections are held every three years at the same time as the council elections.
Q11 <i>How long is the term of an appointed DHB Board member?</i>	Up to three years but they may be appointed for a shorter time. The Minister can appoint them for further terms but they can only serve a maximum of three consecutive terms (i.e.nine years).
Q12 <i>What do Board members do?</i>	<p>They are responsible for the governance of the DHB. They must work in a financially responsible way, and in the best interests of the health of the whole population of the DHB.</p> <p>Governance is the strategic oversight of the DHB, to ensure that the DHB's management implements the strategic vision developed by the board.</p> <p>Board members do not manage the DHB. That is the responsibility of the Chief Executive Officer (CEO), who is appointed by the board, and staff who report to the CEO.</p>
Q13 <i>Who runs these elections?</i>	The DHB appoints an Electoral Officer (the DHBEO) to run the DHB election. The DHBEO must be the Electoral Officer for one of the Councils in the DHB district.
Q14 <i>Who pays for the DHB Election?</i>	The DHB pays for its share of the election costs. Because the DHB election is run together with the Council election(s), many of the costs are shared between the parties on an agreed basis.
Q15 <i>When are the elections this year?</i>	They are the same day as the council elections. Voting documents will be posted out between 17 and 22 September and they must be back with the Electoral Officer by noon on 9 October when the election closes.
Q16 <i>Can the public attend DHB meetings?</i>	Generally yes but, as with council meetings, there may be some publicly excluded matters discussed from time to time. The grounds for excluding the public are the same as for withholding information under the Official Information Act 1982.
Q17 <i>Does the DHB board appoint staff members?</i>	No. The board appoints the Chief Executive Officer who has full responsibility for staff appointments.

Candidates

Questions

Q18 *How much are DHB members paid?*

Answers

Taranaki District Health Board members are currently paid \$18,000 per annum plus \$250 for each statutory advisory committee meeting that they are appointed to and attend.

Members are also reimbursed for actual and reasonable expenses incurred in carrying out their DHB duties (e.g. mileage allowance for attending meetings).

Q19 *Who is eligible to stand for the DHB?*

Most people qualify as candidates at an election of a DHB if they are registered as a New Zealand parliamentary elector and are a New Zealand citizen.

It is not necessary to live within the DHB district to stand as a candidate for election to that DHB.

Some people, such as those who are undischarged bankrupts and people convicted of offences punishable by imprisonment of 2 years or more (and who have not served their sentence) are not eligible to sit on DHB boards (more details can be found in Clause 17 of Schedule 2 to the New Zealand Public Health and Disability Act 2000).

Q20 *Do you have to be resident in the DHB area to stand for that board?*

No you don't, but the people who nominate you must be.

Q21 *How many boards can I stand for?*

Only one.

Q22 *I work for a DHB. Can I stand?*

Yes, the legislation allows staff members to stand for their DHB board (clause 7 of Schedule 2 to the New Zealand Public Health and Disability Act 2000)

Q23 *When do nominations open?*

They open on 23 July and close at noon on 20 August.

Q24 *How much can I spend on my campaign?*

The expenditure limit for Taranaki District Health Board area is \$55,000.

Candidates

Questions

Q25 *How are candidates' possible conflicts of interest handled?*

Answers

Many people in the community who have an interest in health services are already engaged in some way in health services or organisations which may do business with DHBs.

Every person who stands as a candidate for election to a DHB is required to make a declaration as to conflicts of interest.

The conflict of interest statements are included in the material made available to electors.

All conflicts of interest declared by successful candidates will be included in the DHB's interests register (to which all members, elected and appointed, contribute) and members are obligated to keep this up to date.

Members cannot be involved in any DHB decisions where they have a conflict of interest.

A member who has failed to declare an interest maybe removed from office.

Voting

Questions

Answers

Q26 *Is there any information available to all electors about the people who are standing?*

Candidates are entitled to complete a 150 word (maximum) profile statement about themselves. This and the conflict of interest statement will be published in a booklet with information about all candidates and sent out with voting documents. It will also be available on the Taranaki District Health Board's website – www.tdhb.org.nz and on Local Government Online – www.elections2010.co.nz.

Q27 *Who is eligible to be an elector?*

Registered New Zealand Parliamentary electors may vote for members of the board in the district in which they live.

Q28 *I have more than one property in different board districts. Can I vote for a member in each of those DHBs?*

No, you can only vote for the DHB where you are resident and on the Parliamentary Electoral Roll.

Q29 *What method of voting is used?*

All DHBs elections use the Single Transferable Voting (STV) system. Under STV, voters mark their preferences with numbers instead of ticks.

Q30 *What is STV and how do I vote in an STV election?*

STV stands for Single Transferable Vote. STV is a preferential system of voting where you can rank as few or as many candidates as you like. It is a single vote which can be transferred between candidates to ensure the vote contributes to the election or a least one candidate and is not wasted. If a popular candidate does not need all the votes he or she receives, a proportion is transferred to the voter's next preference. On the other hand, if a candidate is not popular and receives few votes, those votes are transferred to a voter's next preference.

For more information about STV go to www.stv.govt.nz.

To exercise a STV vote, start by writing the number 1 in the box next to the candidate you **most** want to be elected. Write the number 2 next to your **second most** preferred candidate and so on 3, 4, 5 etc.

You can write as many preferences or as few as you like up to however many candidates are standing for that election.

You must write the number 1 for your vote to be counted.

Do not write the same number more than once, e.g. 1, 2, 3, 3, 4, 5, and do not miss a number from your preferences, e.g. 1, 2, 4, 5, 6.

Members

Questions	Answers
Q31 <i>How much time would I need to spend on DHB work if I was elected?</i>	It does vary depending on the DHB but members should expect a commitment of around five days a month, which includes preparation for board and committee meetings, and community liaison. The rule of thumb is for every hour of board/committee meeting allow at least the same amount of time for preparation.
Q32 <i>Do I need any special skills to be a board member?</i>	No, not necessarily. All boards need a mix of skills, backgrounds and experience. This includes people with governance and financial experience, but also community-oriented people who are passionate about health and disability services in their area.
Q33 <i>What are DHB advisory committees?</i>	<p>There are three required under the New Zealand Public Health and Disability Act 2000. They are</p> <ul style="list-style-type: none">• Community and public health advisory committee• Disability support advisory committee• Hospital advisory committee <p>The DHB may establish others in addition to these three committees (e.g. audit, risk and finance committees).</p>
Q34 <i>How are the members of these committees decided?</i>	The DHB appoints members to these advisory committees. In addition to board members, other members may be co-opted to these committees from outside the board.
Q35 <i>Are there any provisions to ensure that the DHB board membership is representative of the various ethnic groups in New Zealand?</i>	<p>The New Zealand Public Health and Disability Act 2000 requires the Minister to ...”endeavour to ensure that:</p> <ol style="list-style-type: none">a) Maori membership of the board is proportional to the number of Maori in the DHB’s resident population (as estimated by Statistics New Zealand); andb) In any event, there are at least 2 Maori members of the board.” <p>The Crown Entities Act 2004 requires the Minister to “take into account the desirability of promoting diversity in the membership of Crown entities” when making appointments.</p> <p>People from all backgrounds are encouraged to stand and the STV form of voting is considered to give better representation for minority groups.</p>
Q36 <i>What about women board members?</i>	There are no specific provisions around gender balance in the legislation but women are encouraged to stand – around 45% of current DHB board members are women.

Results

Questions

Q37 *When will the results be known?*

Answers

As soon as possible after voting closes at noon on 9 October. The DHB Electoral Officer will collate the results and then provide a progress and/or preliminary result to the media and place on the New Plymouth District Council website www.newplymouthnz.com. Candidates will be advised of preliminary results by email or fax.

Final results will not be known until later in the week after the election when special votes have been counted following confirmation of a voters' eligibility to vote.